



# Team Wear

MAKE A DIFFERENCE

WWW.ZATHLETICA.COM







# ABOUT US

The founder of ZA came from Sweden and many doubted the possibilities of starting Floorball in Southeast Asia. As of today, floorball popularity has reached such levels that it was a full medal sport in South East Asia biggest sporting event; the SEA games 2015 in front of totally full arenas with an incredible atmosphere!

ZA started because her founder realised that there was a need for niche sportswear. Floorball is a game which is played by 50% female and 50% male. Yet, it was impossible for the ZA founder to find uniforms for the Singapore team for the World Cup 2005 in Singapore Indoor stadium in ladies Asian cutting. Therefore ZA founder made sure that all designs of Z have both male and female cutting, in BOTH Asian and European sizing.

Let's include all sizes of people from everywhere, regardless of size or gender to play and feel comfortable in ZA. Look good, feel good, play well!

In addition, ZA strongly supports the need to be environmentally friendly. Hence, ZA's jersey is designed with fabrics of the highest quality, and with the most planet-friendly ways whenever possible.



# Why Z?



We have both  
Asian and  
European Sizing



Sizes catered to  
both men and  
women



Top quality fabric  
and design





# *Fit Guide*

## **Z-TIGHT**

- Second skin fit that conforms to the shape of the body
- Tight fitting but allows flexibility and movement of the body

## **Z-SLIMFIT**

- Next to the skin fit
- Enhance tackle evasion



## **Z-REGULAR**

- Straight body regular fit
- Slim and has an athletic cut



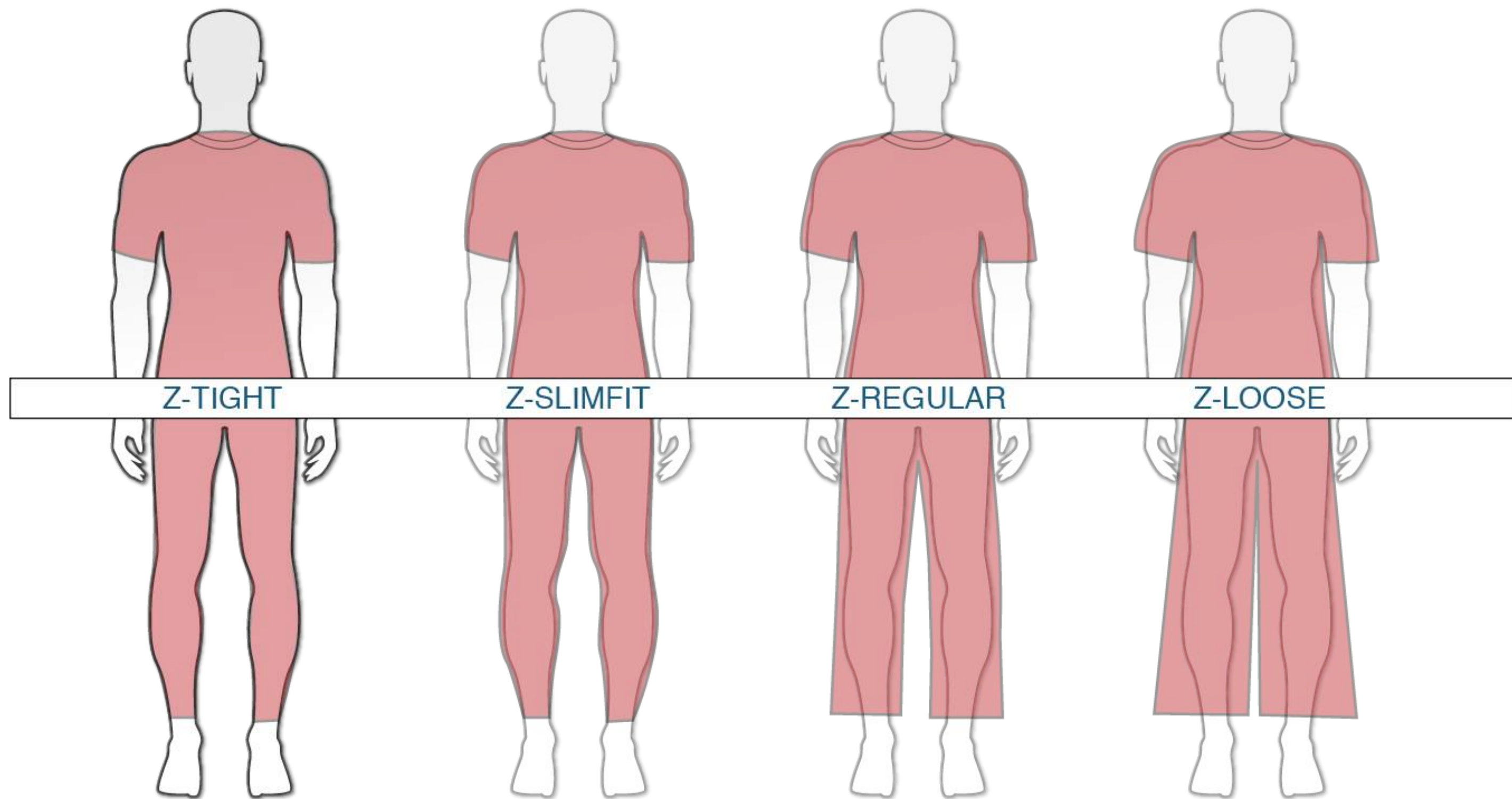
## **Z-LOOSE**

- Gives complete comfort and a full range of motion with greater breathability.

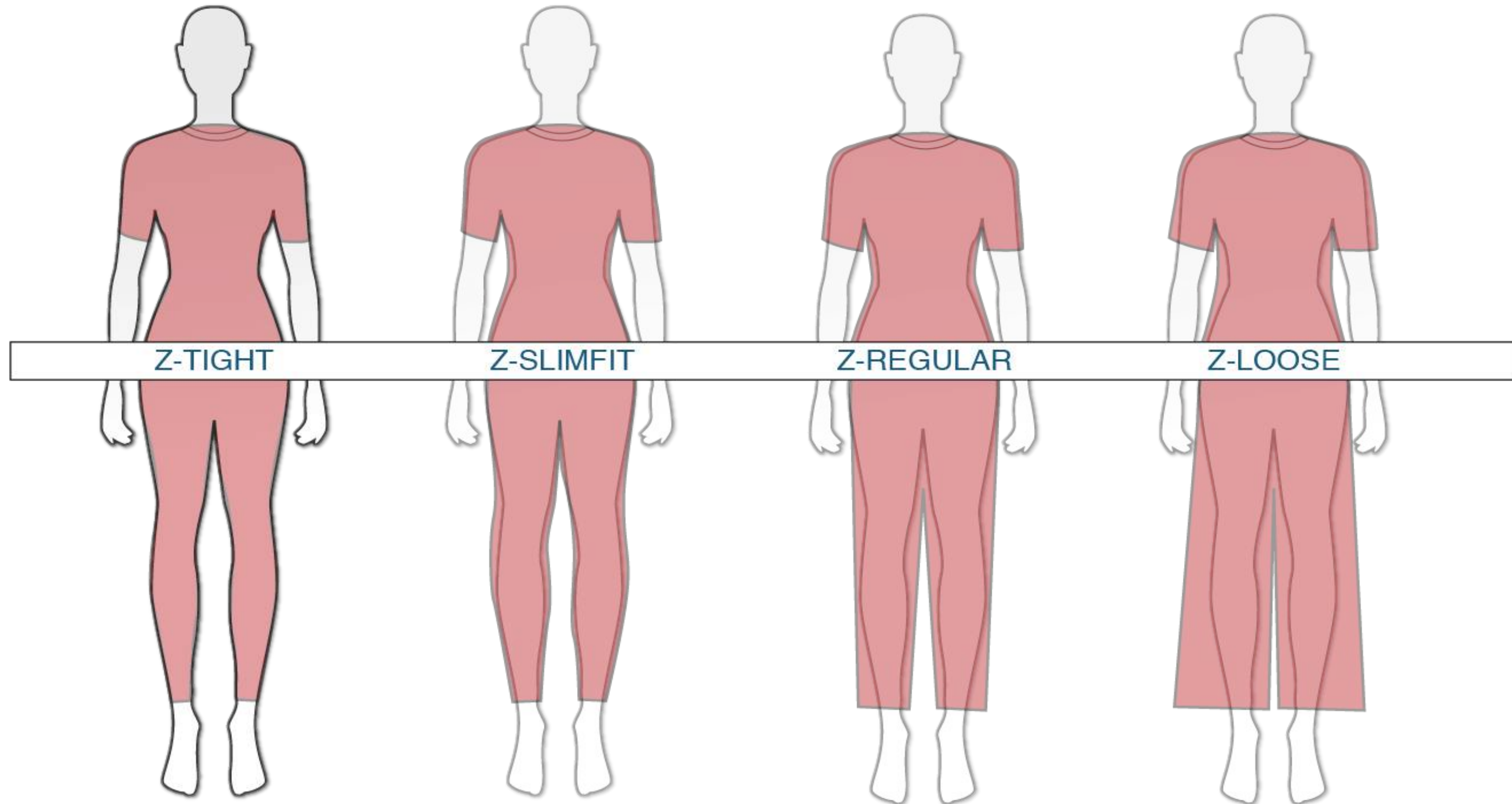




# Z-MEN'S FITGUIDE



# Z-WOMEN'S FITGUIDE





# Z-SIZING

## MEN'S

SIZE:	Chest (circumference)	Waist (circumference)	Length (Neck to bottom)	Inseam
XS	35 - 36	26 - 27	26	3.5 - 8.5
S	37 - 38	27 - 28	27	3.5 - 9
M	39 - 40	28 - 29	28	3.5 - 9.5
L	41 - 42	30 - 31	29	3.5 - 10
XL	43 - 44	31 - 32	30	3.5 - 10.5
XXL	45 - 46	32 - 33	31	3.5 - 11

## WOMEN'S

SIZE:	Chest (circumference)	Waist (circumference)	Length (Neck to bottom)	Inseam
XS	31 - 32	29 - 31	24	2.5 - 7
S	33 - 34	31 - 33	25	2.5 - 7.5
M	35 - 36	33 - 35	26	2.5 - 8
L	37 - 38	35 - 37	27	2.5 - 8.5
XL	39 - 40	37 - 39	28	2.5 - 9

If you are looking for European sizing, please contact us immediately

# CONTENT

---

FLOORBALL - 11

ULTIMATE FRISBEE - 16

NETBALL - 20

TOUCH RUGBY - 23

FOOTBALL - 26

SOCKS - 31

HOODIES/JACKETS - 32-33

TRACKSUITS - 34-35

# HOW TO ORDER

①

## DESIGN

Choose product style and templates

②

## CHOOSE FIT

Tailor your product to your desired fit

③

## CUSTOMISED

Select team's colour and logo design

④

## PLACE ORDER

Place your order with our sales representative, [sales@z-athletica.com](mailto:sales@z-athletica.com)





# FLOORBALL

SIZES		SLIM FIT SLEEVES	REGULAR FIT SLEEVES	REGULAR LONG SLEEVES
Asian Sizes: Men: XS-XXL Women: XS-XL				
Eur Sizes: Men: S-XXXL Women: XS-XL				
fabric	Versatilis	ROUND-NECK COLLAR	V-NECK COLLAR	
		V-STUB COLLAR	ECLIPSE COLLAR	

## Key features:

- Top quality fabric (provides comfort and performance)
- 5 different collars to choose for your team
- 3 different fittings to suit your taste

### standard colours

black	navy	royal
red	white	sky

### premium colours

purple	turquoise	yellow
pink	orange	green
gold	grey	silver
maroon	cream	customised colour

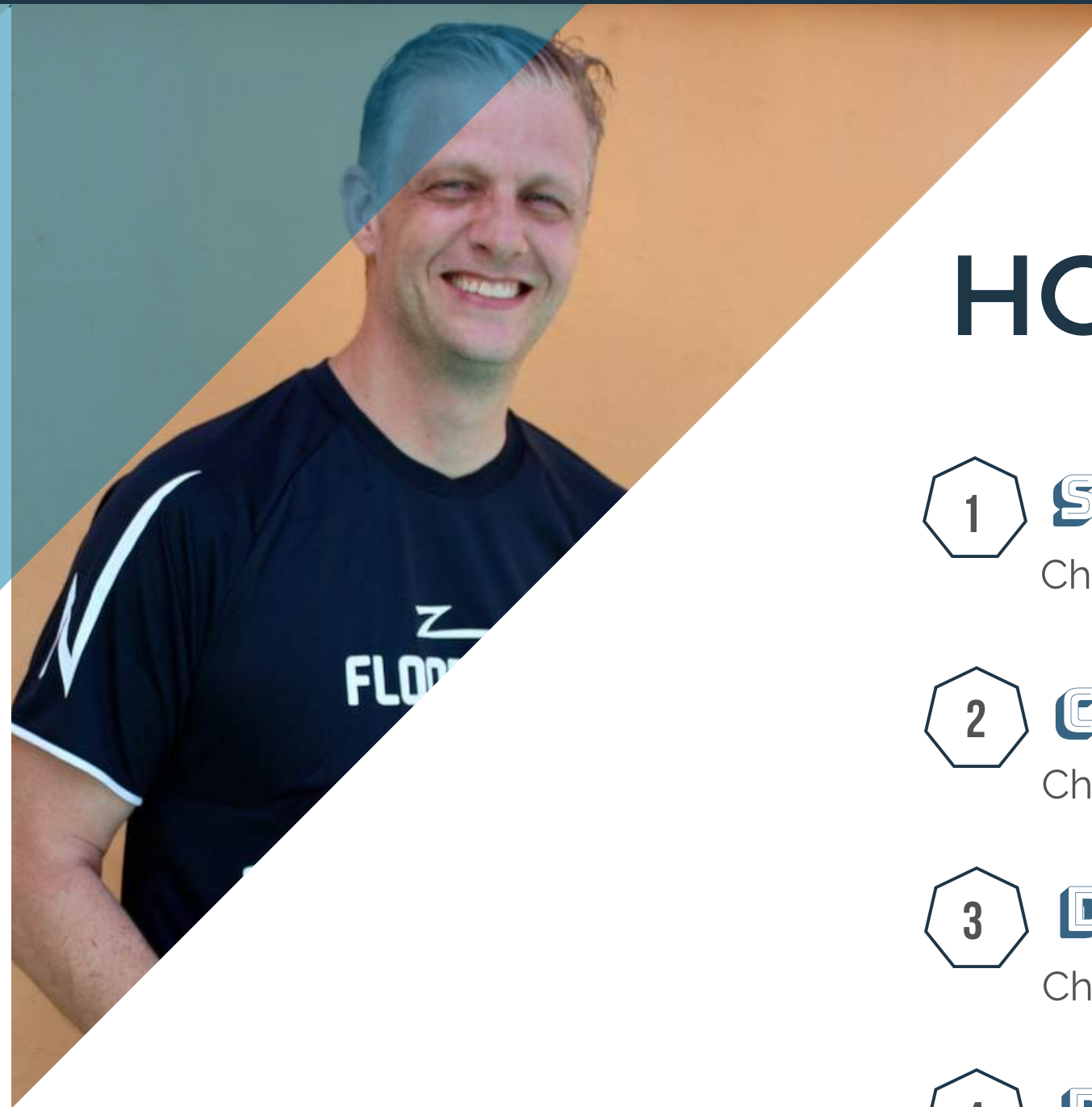
# DESIGNS

## standard colours

black	navy	royal
red	white	sky

## premium colours

purple	turquoise	yellow
pink	orange	green
gold	grey	silver
maroon	cream	customised colour



## HOW TO ORDER

1

### STYLE

Choose your fitting and collar

2

### COLOURS

Choose colours from the palette

3

### DESIGN

Choose your desired pattern

4

### PERSONALISE

Logos and sponsors can be printed or embroidered



# DESIGNS

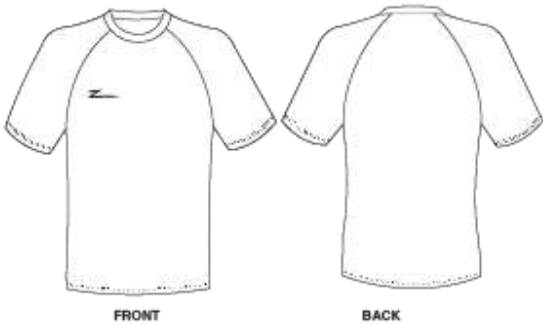
## standard colours

black	navy	royal
red	white	sky

## premium colours

purple	turquoise	yellow
pink	orange	green
gold	grey	silver
maroon	cream	customised colour

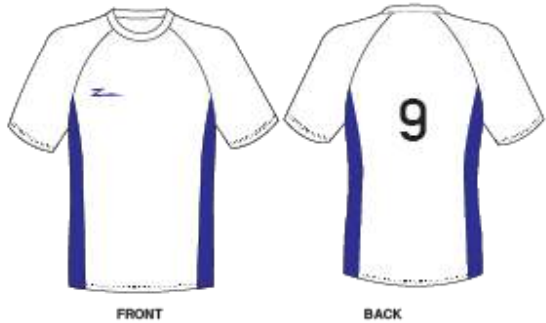
Design your own



ZA-012A-0192



ZA-012A-0570



ZA-012A-0153



ZA-012A-0145



ZA-012A-0655





ZA-012A-0656





# SHORTS

SIZES	L1 SHORTS	L2 SHORTS		
<p><u>Asian Sizes:</u> Men: XS-XXL Women: XS-XL</p> <p><u>Eur Sizes:</u> Men: S-XXXL Women: XS-XL</p>				
fabric	<u>INSEAM</u>	<u>INSEAM</u>		
Versatilis	<p><u>MEN:</u></p> <p>XS - 8.5 inch S - 9 inch M - 9.5 inch L - 10 inch XL - 10.5 inch XXL - 11 inch</p>	<p><u>WOMEN:</u></p> <p>XS - 7.5 inch S - 8 inch M - 8.5 inch L - 9 inch XL - 9.5 inch XXL - 10 inch</p>	<p><u>MEN:</u></p> <p>XS - 5 inch S - 5.5 inch M - 6 inch L - 6.5 inch XL - 7 inch XXL - 7.5 inch</p>	<p><u>WOMEN:</u></p> <p>XS - 4.5 inch S - 5 inch M - 5.5 inch L - 6 inch XL - 6.5 inch XXL - 7 inch</p>

## standard colours

black	navy	royal
red	white	sky

## premium colours

purple	turquoise	yellow
pink	orange	green
gold	grey	silver
maroon	cream	customised colour



# DESIGNS

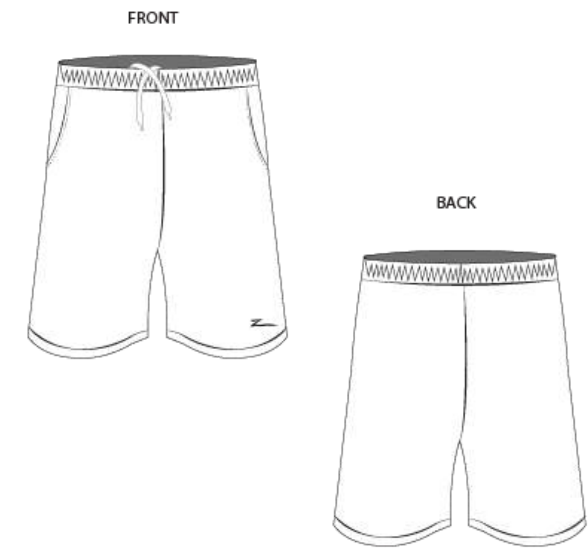
## standard colours

black	navy	royal
red	white	sky

## premium colours

purple	turquoise	yellow
pink	orange	green
gold	grey	silver
maroon	cream	customised colour

Design your own



ZA-012B-48

FRONT



BACK



ZA-012B-0136 (L1)

FRONT



BACK



ZA-012B-0184 (L1)

FRONT



BACK



ZA-012B-0196

FRONT



BACK



# HOW TO ORDER

1

## STYLE

Choose your fitting and collar

2

## COLOURS

Choose colours from the palette

3

## DESIGN

Choose your desired pattern

4

## PERSONALISE

Logos and sponsors can be printed or embroidered

# ULTIMATE FRISBEE

## Key features:





- Top quality fabric (provides comfort and performance)
- 3 different collars to choose for your team

### standard colours

black	navy	royal
red	white	sky

### premium colours

purple	turquoise	yellow
pink	orange	green
gold	grey	silver
maroon	cream	customised colour

SIZES		REGULAR FIT SLEEVES	ROUND-NECK COLLAR
<u>Asian Sizes:</u> Men: XS-XXL Women: XS-XL			
<u>Eur Sizes:</u> Men: S-XXXL Women: XS-XL			
fabric	Versatilis	V-STUB COLLAR	ECLIPSE COLLAR
			





# DESIGNS

## standard colours

black	navy	royal
red	white	sky

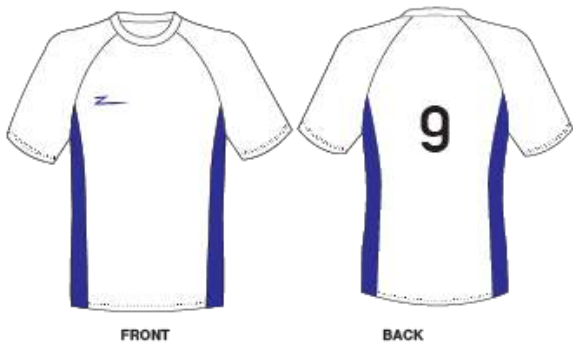
## premium colours

purple	turquoise	yellow
pink	orange	green
gold	grey	silver
maroon	cream	customised colour

ZA-013A-0225



ZA-012A-0570



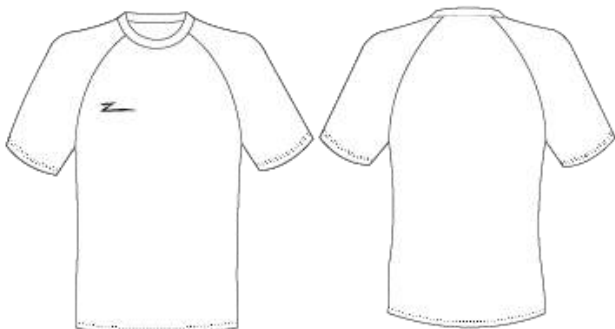
ZA-012A-0145



ZA-012A-0153



Design your own



# HOW TO ORDER

- 1 STYLE**  
Choose your fitting and collar
- 2 COLOURS**  
Choose colours from the palette
- 3 DESIGN**  
Choose your desired pattern
- 4 PERSONALISE**  
Logos and sponsors can be printed or embroidered

# SHORTS DESIGNS

## standard colours

black	navy	royal
red	white	sky

## premium colours

purple	turquoise	yellow
pink	orange	green
gold	grey	silver
maroon	cream	customised colour

## HOW TO ORDER

1

### STYLE

Choose your fitting and length of shorts

2

### COLOURS

Choose colours from the palette

3

### DESIGN

Choose your desired pattern

Design your own

FRONT



BACK



ZA-012B-48

FRONT



BACK



A

B

ZA-012B-0175

FRONT



BACK



A

B

ZA-012B-484

FRONT



Pocket

BACK



A

B

ZA-012B-0660

FRONT



BACK





A

B





# SHORTS

SIZES	L1 SHORTS	L2 SHORTS		
<p><u>Asian Sizes:</u> Men: XS-XXL Women: XS-XL</p> <p><u>Eur Sizes:</u> Men: S-XXXL Women: XS-XL</p>				
fabric	<u>INSEAM</u>	<u>INSEAM</u>		
Versatilis	<p><u>MEN:</u> XS - 8.5 inch S - 9 inch M - 9.5 inch L - 10 inch XL - 10.5 inch XXL - 11 inch</p>	<p><u>WOMEN:</u> XS - 7.5 inch S - 8 inch M - 8.5 inch L - 9 inch XL - 9.5 inch XXL - 10 inch</p>	<p><u>MEN:</u> XS - 5 inch S - 5.5 inch M - 6 inch L - 6.5 inch XL - 7 inch XXL - 7.5 inch</p>	<p><u>WOMEN:</u> XS - 4.5 inch S - 5 inch M - 5.5 inch L - 6 inch XL - 6.5 inch XXL - 7 inch</p>

## standard colours

black	navy	royal
red	white	sky

## premium colours

purple	turquoise	yellow
pink	orange	green
gold	grey	silver
maroon	cream	customised colour





# NETBALL

SIZES		SLIM FIT SLEEVES	ROUND-NECK COLLAR
<u>Asian Sizes:</u> Women: XS-XL			
<u>Eur Sizes:</u> Women: XS-XL			
fabric	Versatilis	SLEEVELESS TOPS	V-NECK COLLAR
			

## Key features:

- Top quality fabric (provides comfort and performance)
- 2 different collars to choose for your team
- ZA provides sleeveless tops to suit your team!

### standard colours

black	navy	royal
red	white	sky

### premium colours

purple	turquoise	yellow
pink	orange	green
gold	grey	silver
maroon	cream	customised colour

# DESIGNS

## standard colours

black	navy	royal
red	white	sky

## premium colours

purple	turquoise	yellow
pink	orange	green
gold	grey	silver
maroon	cream	customised colour

Design your own



FRONTBACK

ZA-012-010



FRONTBACK

A

B

ZA-012-011



FRONTBACK

A

B

Design your own  
(sleeveless)



FRONTBACK

ZA-012-012



FRONTBACK

A

B

ZA-012-013



FRONTBACK

A

B



# SHORTS/SKORTS

## standard colours

black	navy	royal
red	white	sky

## premium colours

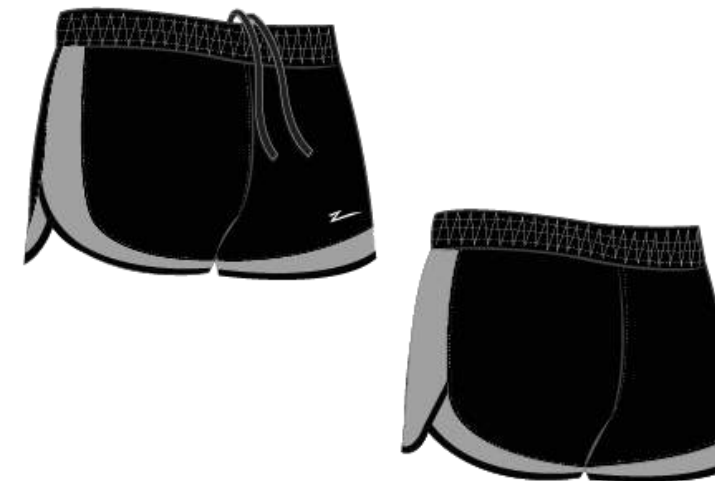
purple	turquoise	yellow
pink	orange	green
gold	grey	silver
maroon	cream	customised colour

ZA-B012-13



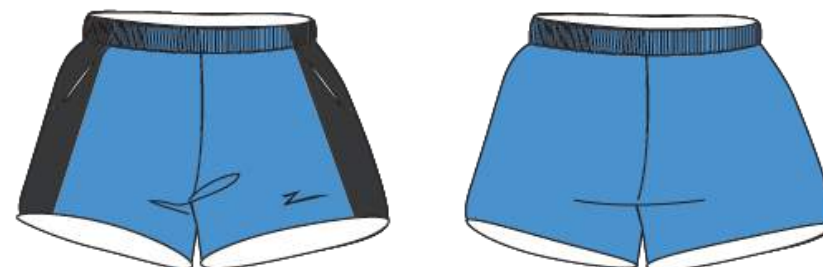
A B

ZA-B012-14



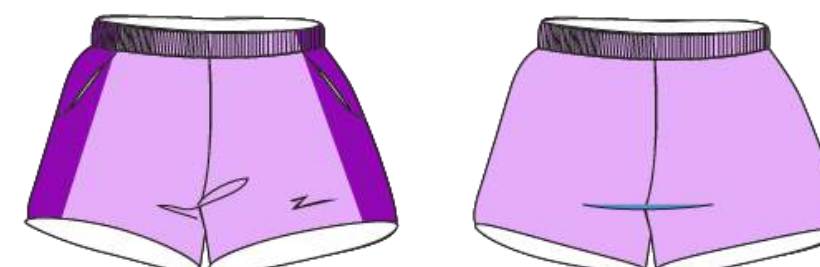
A B

ZA-B012-15



A B

ZA-B012-16



A B

If you would like to have skorts as part of your team jersey design, please contact us directly

Design your own


PRODUCT CODE: ZA-B012-13



# TOUCH RUGBY

## Key features:

- Top quality fabric (provides comfort and performance)
- 2 different collars to choose for your team
- ZA provides sleeveless tops to suit your team!

SIZES		SLIM FIT SLEEVES	ROUND-NECK COLLAR
<u>Asian Sizes:</u> Women: XS-XL			
<u>Eur Sizes:</u> Women: XS-XL			
fabric	Versatilis	SLEEVELESS TOPS	V-NECK COLLAR
			





# DESIGNS

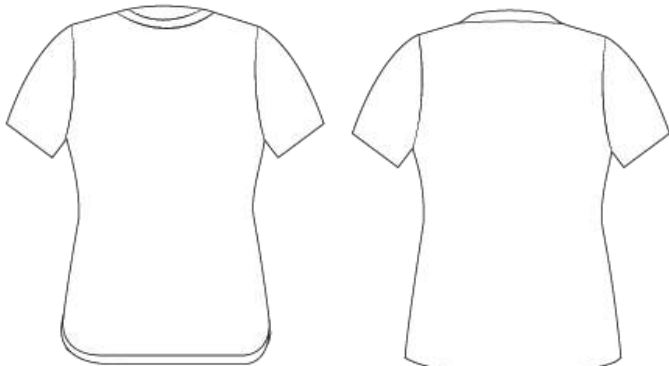
## standard colours

black	navy	royal
red	white	sky

## premium colours

purple	turquoise	yellow
pink	orange	green
gold	grey	silver
maroon	cream	customised colour

Design your own



FRONT

BACK

ZA-012-033



A

B

ZA-012-034

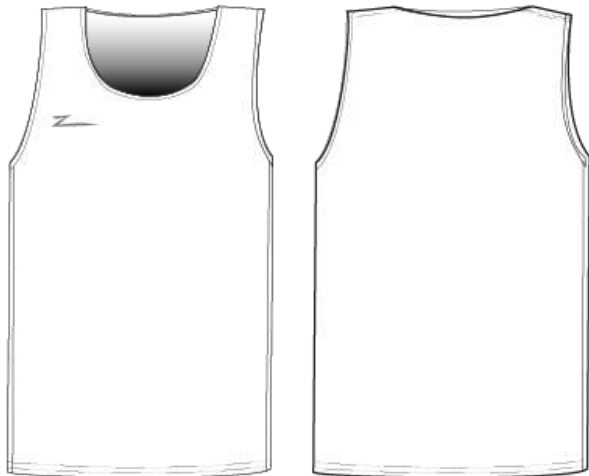


A

B

C

Design your own  
(sleeveless)



ZA-012-035



FRONT

BACK

A

B

C

ZA-012-036



A

B

C

# MALE SHORTS

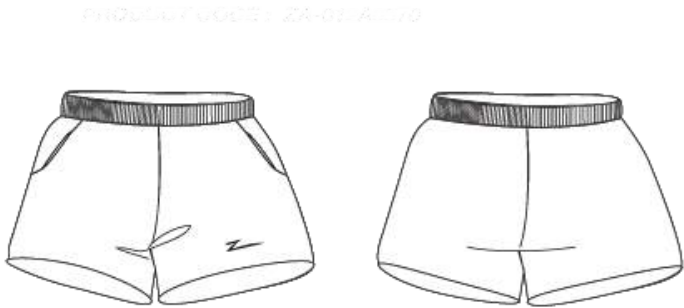
## standard colours

black	navy	royal
red	white	sky

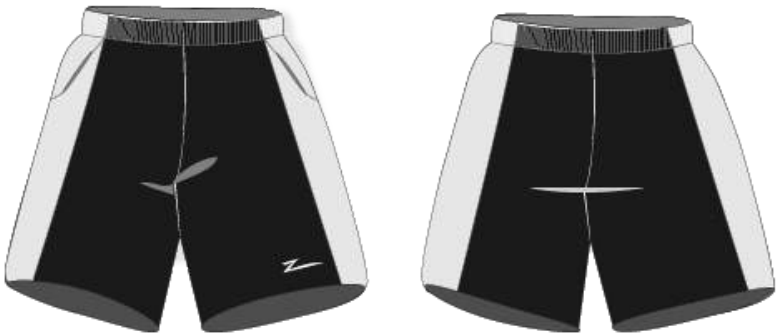
## premium colours

purple	turquoise	yellow
pink	orange	green
gold	grey	silver
maroon	cream	customised colour

Design your own

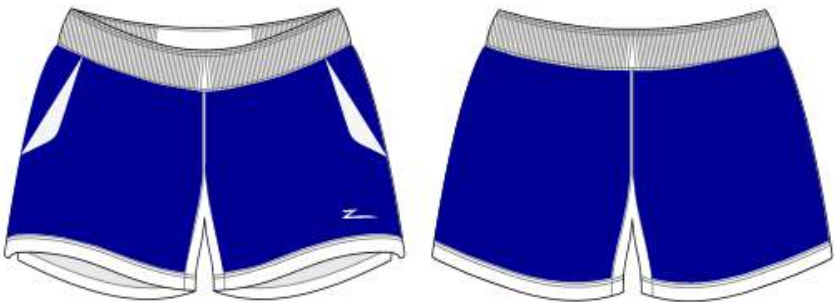


ZA-B011-003 (Male)



A B

ZA-B011-008 (Male)



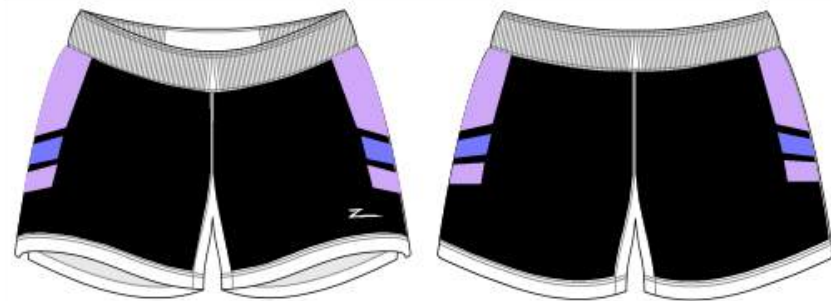
A B

ZA-B011-009 (Male)



A B C

ZA-B012-009 (Male)



A B C



# FEMALE SHORTS

## standard colours

black	navy	royal
red	white	sky

## premium colours

purple	turquoise	yellow
pink	orange	green
gold	grey	silver
maroon	cream	customised colour

Design your own

Product code: ZA-B012-0000



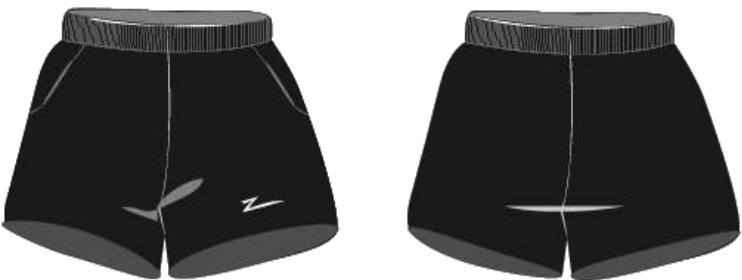
ZA-B012-003 (Female)



A B

Fabric: Hikari FVF

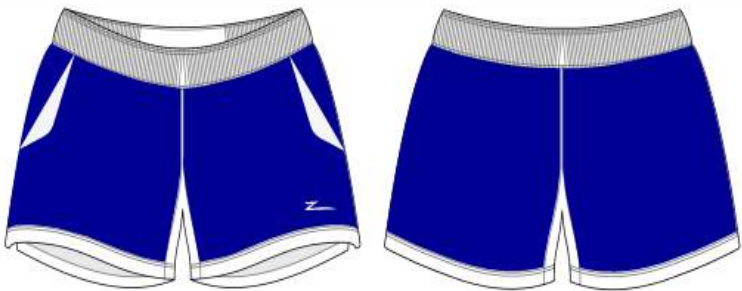
ZA-B012-010 (Female)



A B

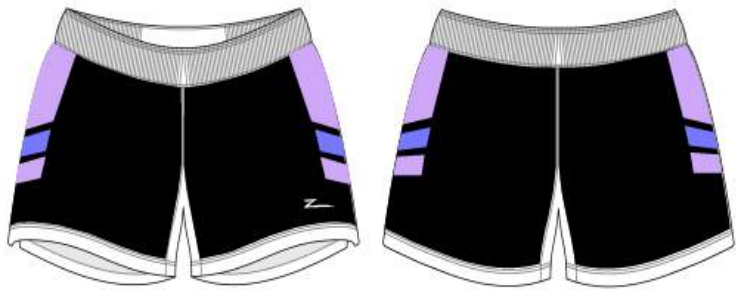
Fabric: Tractus FVF

ZA-B012-011 (Female)



A B

ZA-B012-012 (Female)



A B C







# FOOTBALL

SIZES		SLIM FIT SLEEVES	REGULAR FIT SLEEVES	REGULAR LONG SLEEVES
<u>Asian Sizes:</u> Men: XS-XXL Women: XS-XL  <u>Eur Sizes:</u> Men: S-XXXL Women: XS-XL				
fabric	Versatilis	ROUND-NECK COLLAR	V-NECK COLLAR	
		V-STUB COLLAR	ECLIPSE COLLAR	

## standard colours

black	navy	royal
red	white	sky

## premium colours

purple	turquoise	yellow
pink	orange	green
gold	grey	silver
maroon	cream	customised colour



# DESIGNS

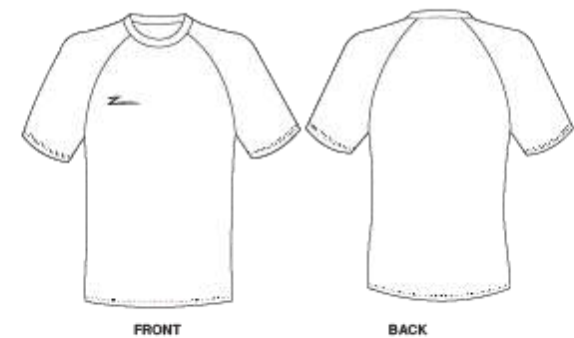
## standard colours

black	navy	royal
red	white	sky

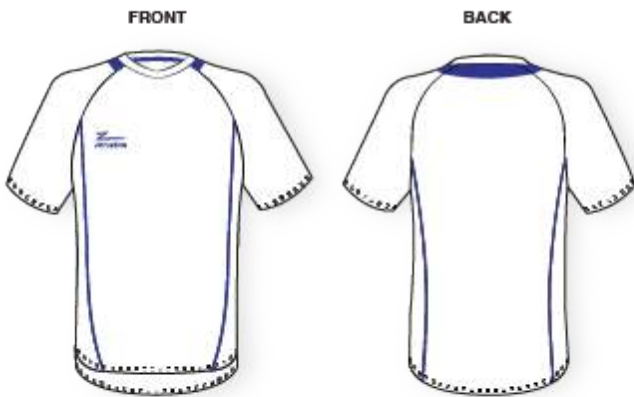
## premium colours

purple	turquoise	yellow
pink	orange	green
gold	grey	silver
maroon	cream	customised colour

Design your own



ZA-012A-0134



ZA-012A-0191



ZA-012A-0200



ZA-012A-0197



ZA-012A-0183



ZA-012A-0194



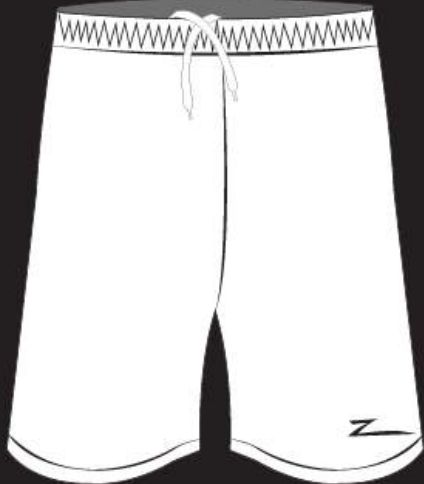

ZA-012A-0180







# SHORTS

SIZES		L1 SHORTS	L2 SHORTS
<p><u>Asian Sizes:</u> Men: XS-XXL Women: XS-XL</p> <p><u>Eur Sizes:</u> Men: S-XXXL Women: XS-XL</p>			
fabric	<u>INSEAM</u>		<u>INSEAM</u>
Versatilis	<u>MEN:</u> XS -8.5 inch S - 9 inch M - 9.5 inch L - 10 inch XL - 10.5 inch XXL - 11 inch	<u>WOMEN:</u> XS - 7.5 inch S - 8 inch M - 8.5 inch L - 9 inch XL - 9.5 inch XXL - 10 inch	<u>MEN:</u> XS -5 inch S - 5.5 inch M - 6 inch L - 6.5 inch XL - 7 inch XXL - 7.5 inch
			<u>WOMEN:</u> XS - 4.5 inch S - 5 inch M - 5.5 inch L - 6 inch XL - 6.5 inch XXL - 7 inch

## standard colours

black	navy	royal
red	white	sky

## premium colours

purple	turquoise	yellow
pink	orange	green
gold	grey	silver
maroon	cream	customised colour



# SHORTS DESIGNS

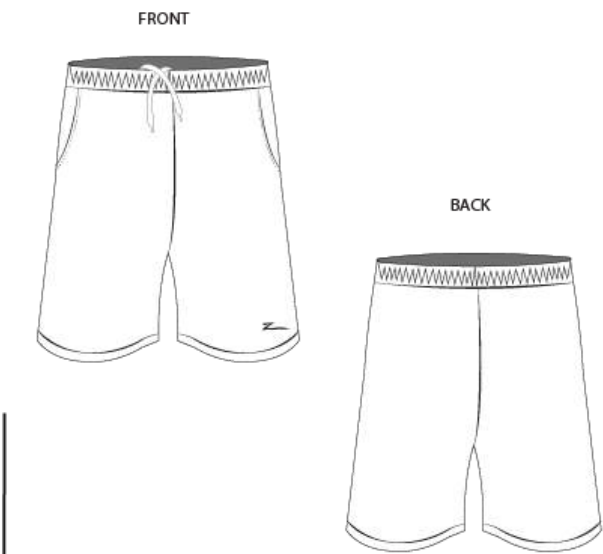
## standard colours

black	navy	royal
red	white	sky

## premium colours

purple	turquoise	yellow
pink	orange	green
gold	grey	silver
maroon	cream	customised colour

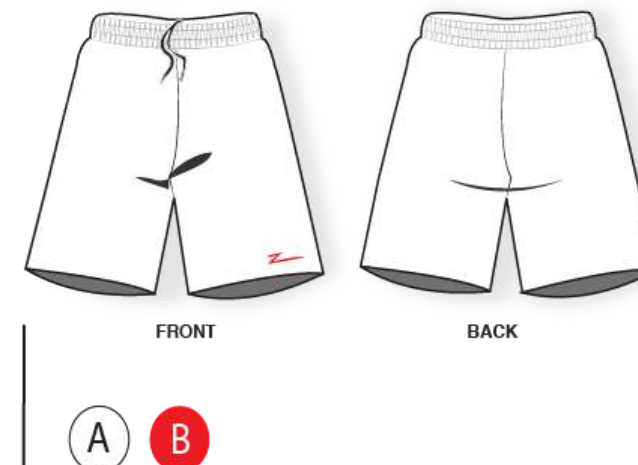
Design your own



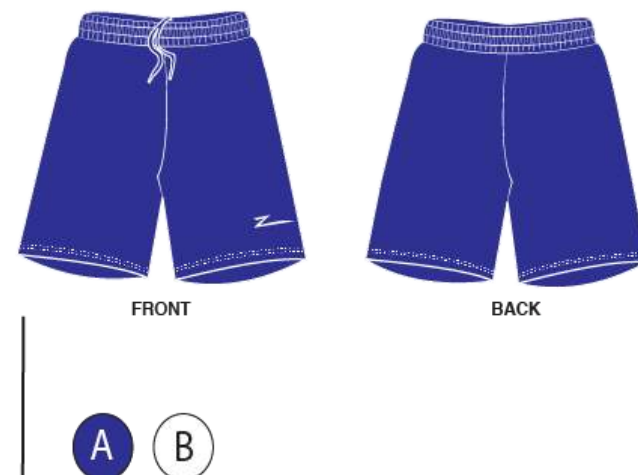
ZA-012B-48 (L1)



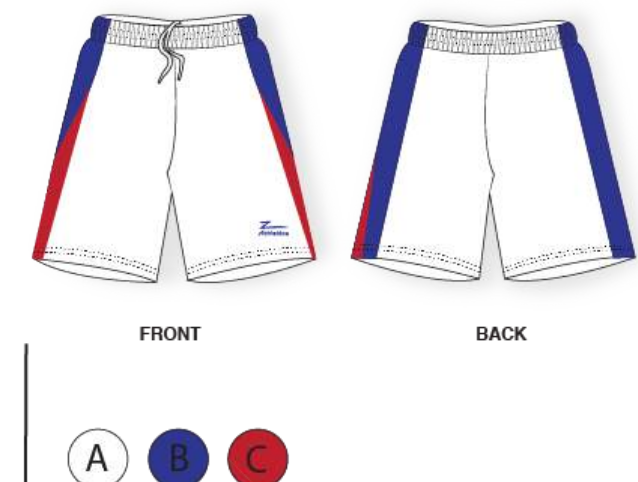
ZA-012B-0190 (L1)



ZA-012B-0571 (L1)



ZA-012B-0149 (L1)



## HOW TO ORDER

1

### STYLE

Choose your fitting and length of shorts

2

### COLOURS

Choose colours from the palette

3

### DESIGN

Choose your desired pattern

# SOCKS



Senior: ZA-001-001  
Junior: ZA-002-002

## HOW TO ORDER

1

### COLOURS

Choose colours from the given picture

2

### CODE

Select the given code that is suitable for your team



# HOODIES

## KEY FEATURES

### FABRICS

TRACTUS  
(WATER RESISTANT)

SKONT (COTTON-FEEL  
PERFORMANCE)

FLEECE

### FIT



REGULAR

### STYLE



FULL ZIP



PULLOVER

### PERFORMANCE

TRACTUS & SKONT



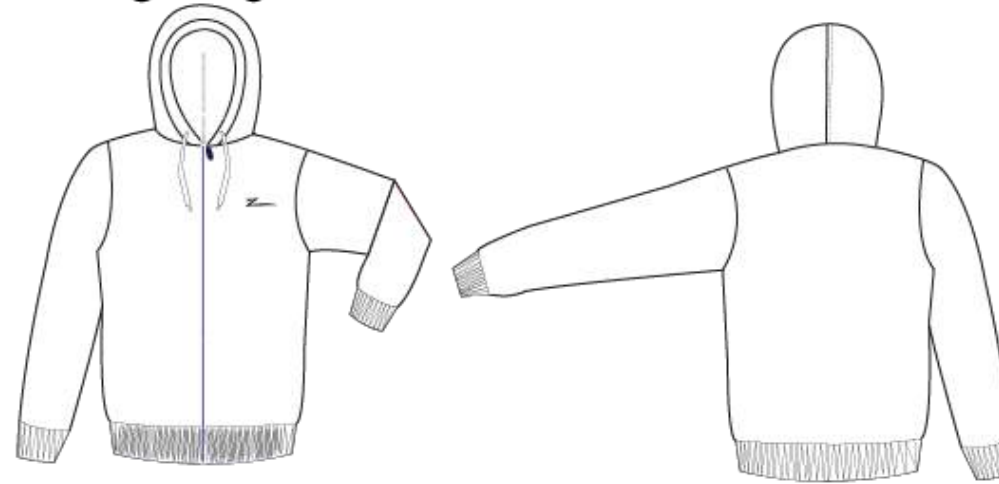
#### standard colours

black	navy	royal
red	white	sky

#### premium colours

purple	turquoise	yellow
pink	orange	green
gold	grey	silver
maroon	cream	customised colour

Design your own



#### FULL ZIP:

Male: ZA-011-014

Female: ZA-012-013

#### PULL-OVER:

Male: ZA-011-015

Female: ZA-012-014



A

B

#### FULL ZIP:

Male: ZA-011-018

Female: ZA-012-017

#### PULL-OVER:

Male: ZA-011-019

Female: ZA-012-018



A

B

#### FULL ZIP:

Male: ZA-011-016

Female: ZA-012-015

#### PULL-OVER:

Male: ZA-011-017

Female: ZA-012-016



A

B

C

#### FULL ZIP:

Male: ZA-011-020

Female: ZA-012-019

#### PULL-OVER:

Male: ZA-011-021

Female: ZA-012-020

# JACKETS

## KEY FEATURES

### FABRICS

TRACTUS  
(WATER RESISTANT)

SKONT (COTTON-FEEL  
PERFORMANCE )

FLEECE

### FIT



REGULAR

### STYLE



FULL ZIP

### PERFORMANCE

TRACTUS & SKONT



#### standard colours

black	navy	royal
red	white	sky

#### premium colours

purple	turquoise	yellow
pink	orange	green
gold	grey	silver
maroon	cream	customised colour



TOP:

Male: ZA-011-030

Female: ZA-012-029



TOP:

Male: ZA-011-031

Female: ZA-012-030



TOP:

Male: ZA-011-032

Female: ZA-012-031



TOP:

Male: ZA-011-033

Female: ZA-012-032





# TRACK-SUITS

## KEY FEATURES

### FABRICS

TRACTUS  
(WATER RESISTANT)

SKONT (COTTON-FEEL  
PERFORMANCE )

FLEECE

### FIT



SLIM  
FIT



REGULAR



LOOSE

### STYLE



FULL ZIP



HOODIE

### PERFORMANCE

TRACTUS & SKONT



#### standard colours

black	navy	royal
red	white	sky

#### premium colours

purple	turquoise	yellow
pink	orange	green
gold	grey	silver
maroon	cream	customised colour



#### TOP:

Male: ZA-011-022

Female: ZA-012-021

#### BOTTOM:

Male: ZA-011-023

Female: ZA-012-022



#### TOP:

Male: ZA-011-024

Female: ZA-012-023

#### BOTTOM:

Male: ZA-011-025

Female: ZA-012-024



# TRACK-SUITS

## KEY FEATURES

### FABRICS

TRACTUS  
(WATER RESISTANT)

SKONT (COTTON-FEEL  
PERFORMANCE )

FLEECE

### FIT



SLIM  
FIT



REGULAR



LOOSE

### STYLE



FULL ZIP



HOODIE

### PERFORMANCE

TRACTUS & SKONT



#### standard colours

black	navy	royal
red	white	sky

#### premium colours

purple	turquoise	yellow
pink	orange	green
gold	grey	silver
maroon	cream	customised colour

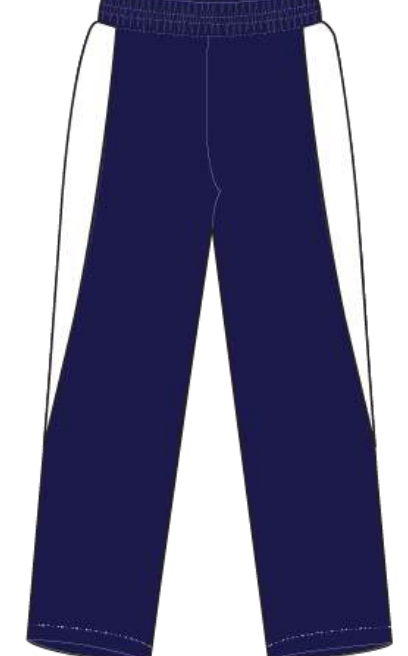
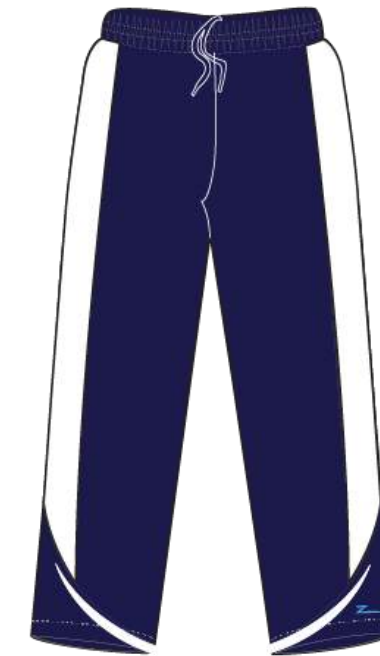


#### TOP:

Male: ZA-011-026  
Female: ZA-012-025

#### BOTTOM:

Male: ZA-011-027  
Female: ZA-012-026



#### TOP:

Male: ZA-011-028  
Female: ZA-012-027

#### BOTTOM:

Male: ZA-011-029  
Female: ZA-012-028



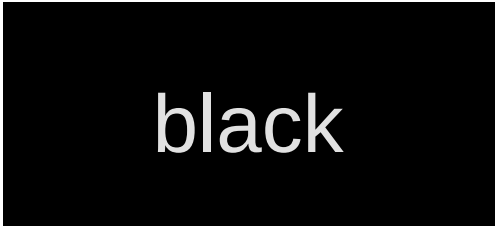


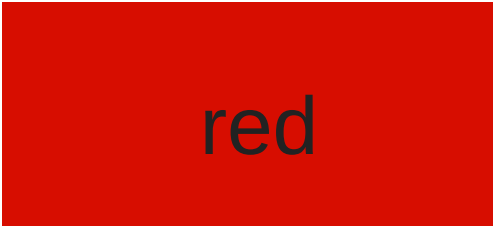



# LOGO GUIDE



Original 'Z' logo

# standard colours

		
code:001	code:002	code:003
		
code:004	code:005	code:006

# premium colours

		
code:007	code:008	code:009
		
code:010	code:011	code:012
		
code:013	code:014	code:015
		
code:016	code:017	

If you would like to have a customised colour, please contact us at [teams@zathletica.com](mailto:teams@zathletica.com)



**THANK YOU FOR  
CHOOSING**

